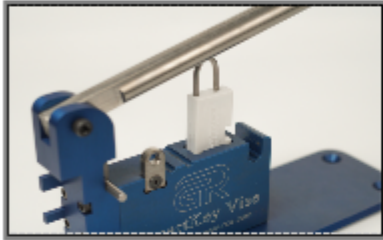


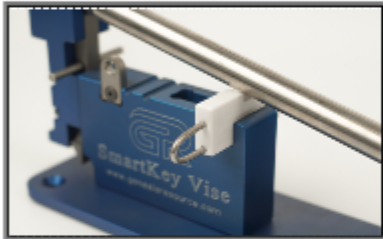
The KeyWatcher **SmartKey Vise** 6-in-1 Tool

by Genesis Resource, Inc.

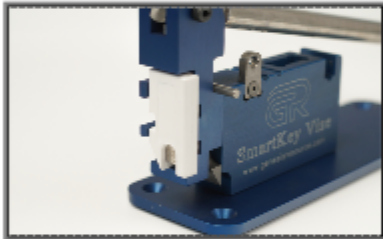
Instructions Guide



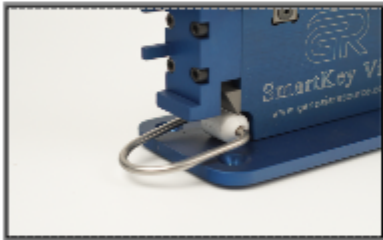
- 1. Seals SmartKeys:** Place the SmartKey in the top chamber towards the center of the vise. Place the new u-ring in line with the holes in the top of the SmartKey. Make sure that the notched end of the u-ring is inserted in the hole on the same side as the notched side of the SmartKey. Bring the lever handle downwards to push the u-ring in.



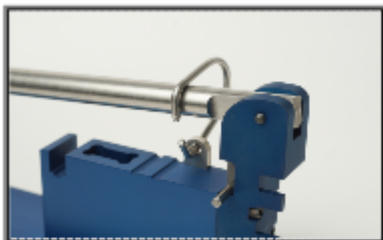
- 2. Secure SmartKey:** Place your SmartKey with the notched side facing upwards in the slot and in line with the lever handle. (U-ring can be on the left or right side.) Apply pressure on the lever handle to firmly hold your SmartKey from moving. Using a small hacksaw or Dremel, cut the top side of the stainless steel u-ring, flush with the edge of the SmartKey. After cutting the top u-ring, remove the u-ring by pulling it out of the SmartKey and discarding it.



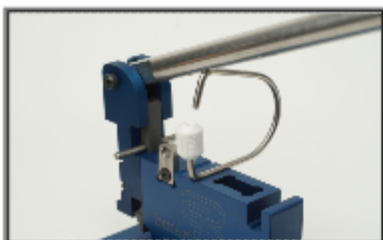
- 3. U-Ring Press:** After cutting the u-ring from the SmartKey, you will need to remove the fragment of the u-ring left inside the SmartKey. To do this, place the SmartKey at the back of the SmartKey Vise with the notch facing left (as pictured). Align the hole on the SmartKey with the pin on the vice and slowly raise the lever. This will press the u-ring fragment into the SmartKey chamber, allowing use of another u-ring.



- 4. Splits Hubs:** The SmartKey Vise is the perfect tool for safely and efficiently cutting and removing the colored hubs from the Morse tamperproof key rings. Simply raise the lever handle to enable the hub to be located under the cutter at the back of the vice. Press the lever handle down firmly to cut the hub in two. Lift the handle to remove the u-ring and hub pieces.



- 5. Spreads Rings:** Make sure hub is completely removed with hub cutter. Slide tamperproof ring over handle with opening facing as shown in picture. Then hook lower end into the eyelet that protrudes up from the vice base. Place one hand on the front base plate of the vice while pulling up on the handle, spreading ring to desired opening.



- 6. Seals Hubs:** Attach a hub to one side of the tamperproof key ring by pressing it on by hand. Attach your keys and your SmartKey to the tamperproof ring. Place the tamperproof key ring with the hub at the bottom in the appropriate groove on top of vise (small rings towards the back and larger ones to the front) and align with corresponding groove in underside of handle. Press the lever handle down to lock the other side of the ring into the hub (you should hear a click). Remove newly sealed ring from vise and rotate hub one full revolution to be sure it's locked.