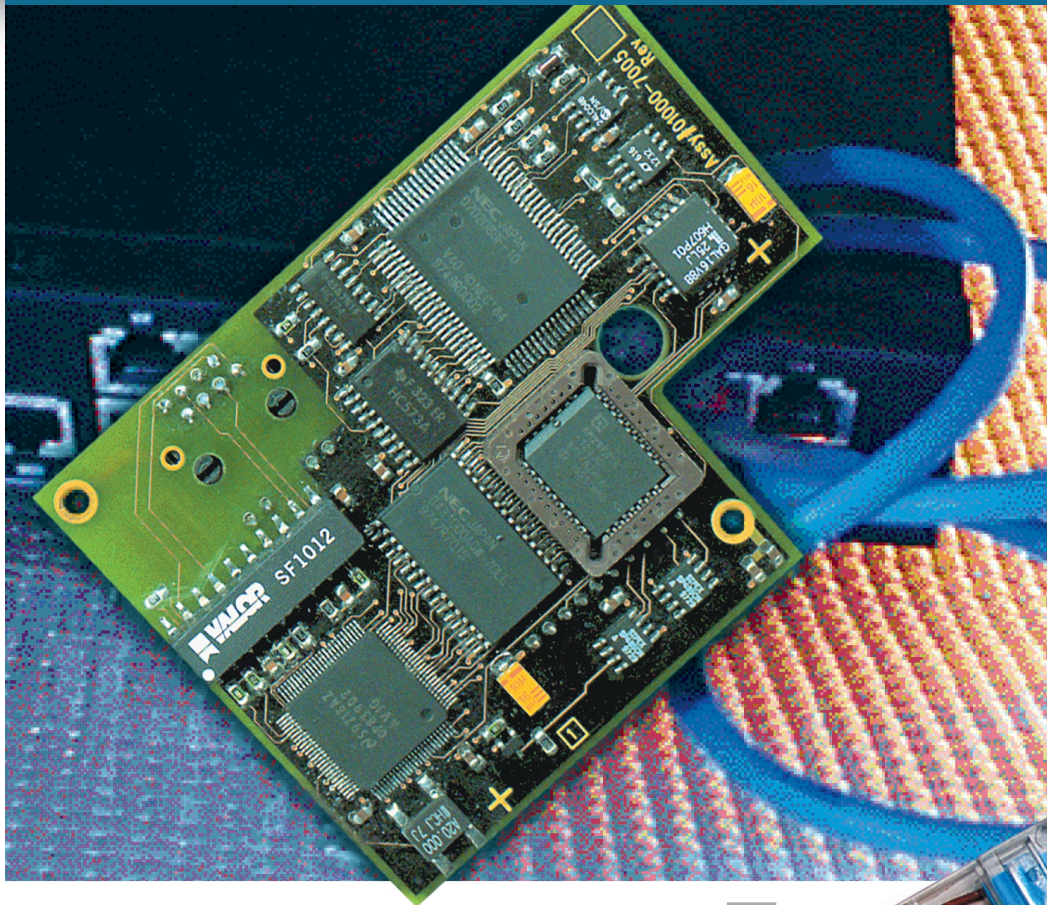


ETHERNET



Ethernet Communications Option

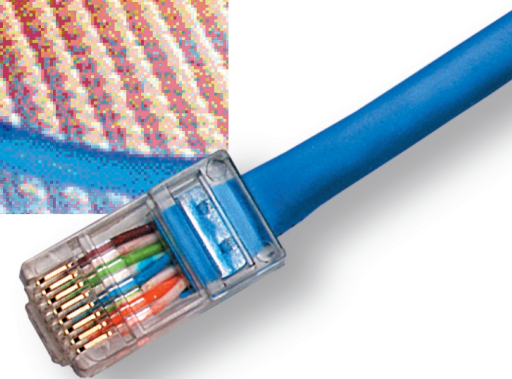
- ▶ *Reduce Communications Costs*
- ▶ *Reduce Installation Costs*
- ▶ *Simple Setup*
- ▶ *Standard TCP/IP Network Protocol*

The EN-200 Ethernet module allows RSI's HandKey™ and HandPunch™ terminals to communicate with host computer over an Ethernet Local Area Network via TCP/IP. This can greatly reduce installation and communications costs by taking advantage of a company's existing data network. Installation is further simplified because the module is completely internal to our biometric terminals. This eliminates the need for an additional power supply and simplifies installation.

Set up is fast and simple. An RJ-45 connector is used to connect to 10Base-T network wiring. The IP address and gateway are set via the terminal set-up menu and keypad. The appropriate subnet mask is automatically generated for the selected IP address. No special set-up programs are required at the host.

Networking flexibility is maximized because multiple hand readers may still be daisy chained via 4-wire RS-485 to a terminal using the Ethernet module. This allows for a remote location with up to 32 terminals to communicate with the host via a single Ethernet connection.

Application Program support for the Ethernet module is available for both Windows 95 and Windows NT environments (32 bit) through RSI's communications API Version 2.20 or higher.



Network Interface:	10 Base-T (RJ-45)
Network Protocol:	TCP/IP
IP Address:	Set at terminal
TCP Port Number :	3001
Subnet Mask:	Automatically generated for selected IP address
Power Consumption:	200mA max increased current draw from terminal @ 12VDC
Part Number:	EN-200

Specifications subject to change

